

Morgen: Längerfristige Entwicklungen der Schweizer Wirtschaft

Prof. Dr. Jan-Egbert Sturm

1. Dezember 2016

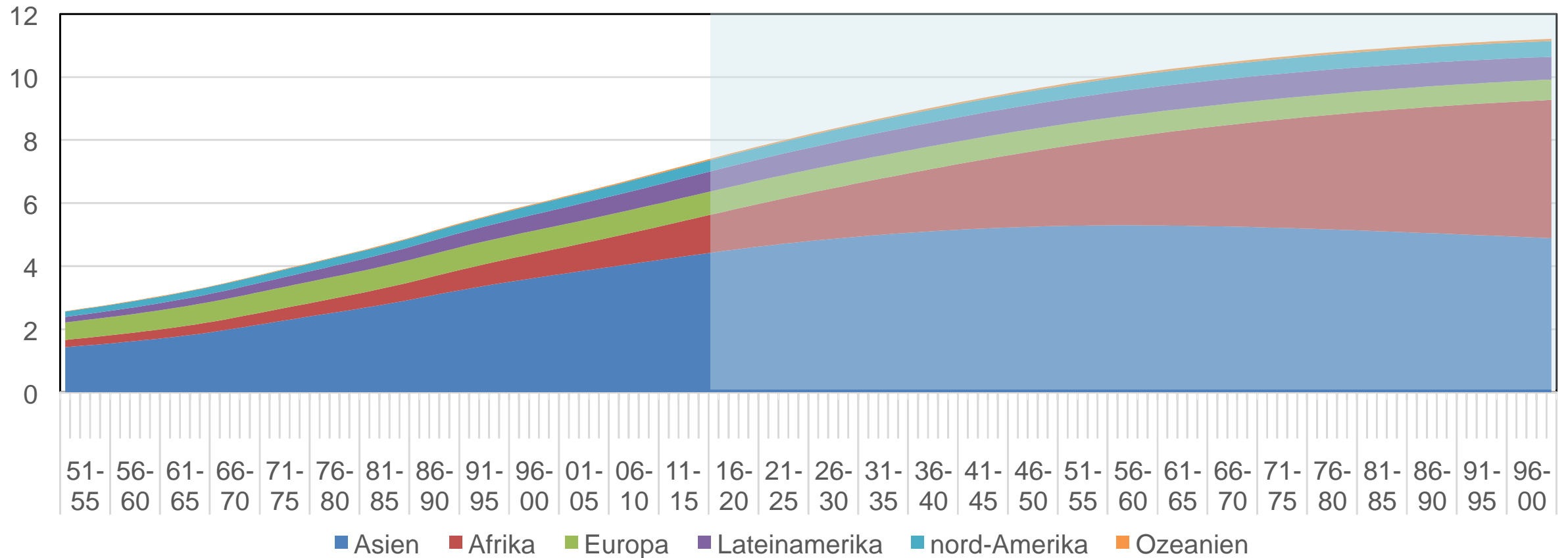
Wichtigste Determinanten langfristiges Wachstum

- Bevölkerungsentwicklung
- Technologischer Fortschritt
 - Industrie 4.0
- Politische und institutionelle Rahmenbedingungen
 - Globalisierung
 - Geld- und Fiskalpolitik / Regulierung

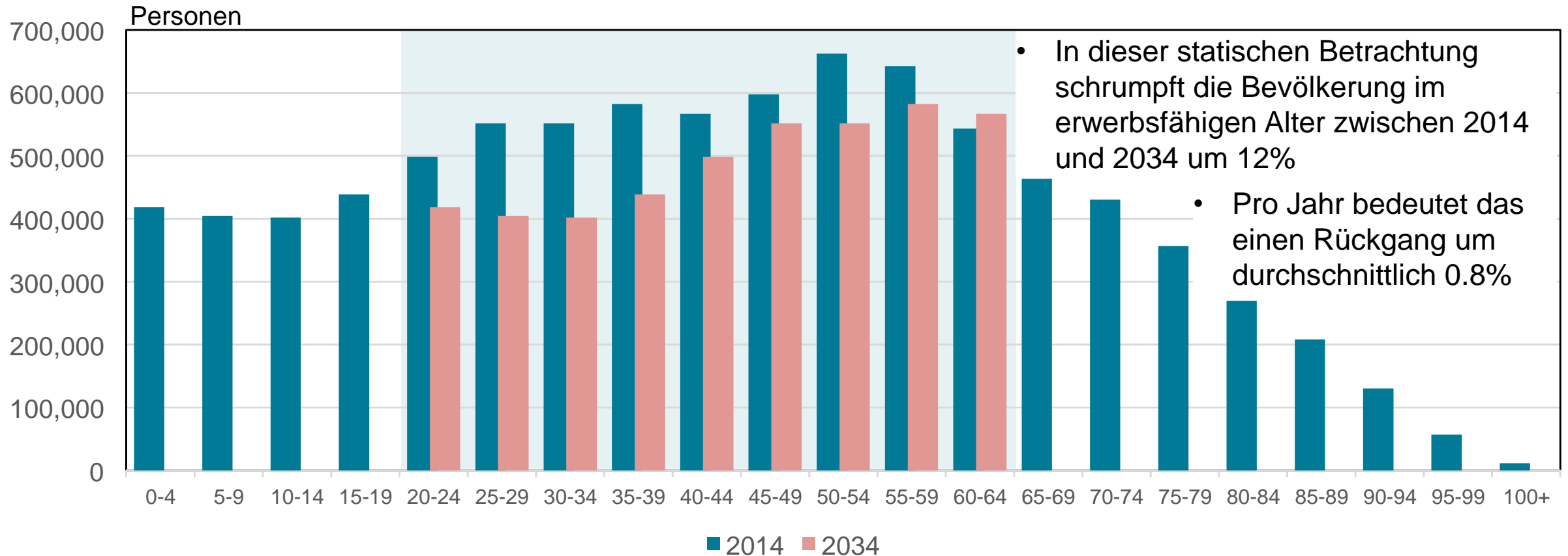


Bevölkerungsentwicklung

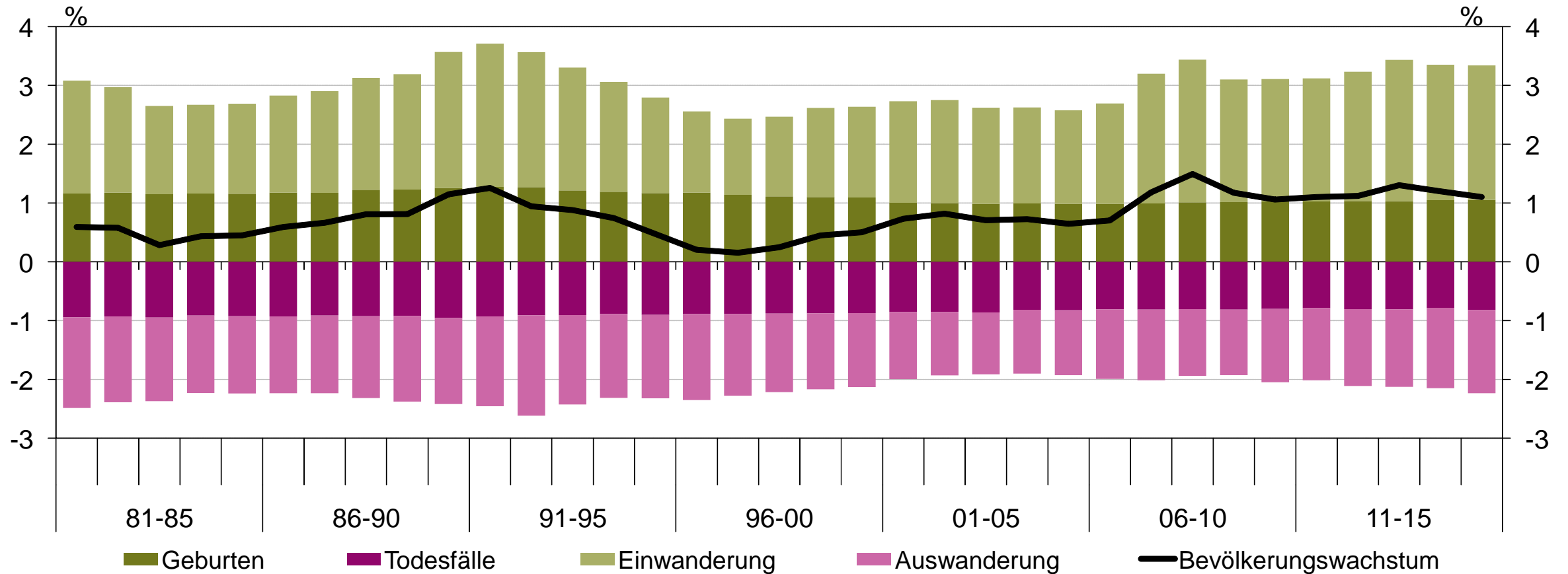
Bevölkerungsentwicklung in der Welt



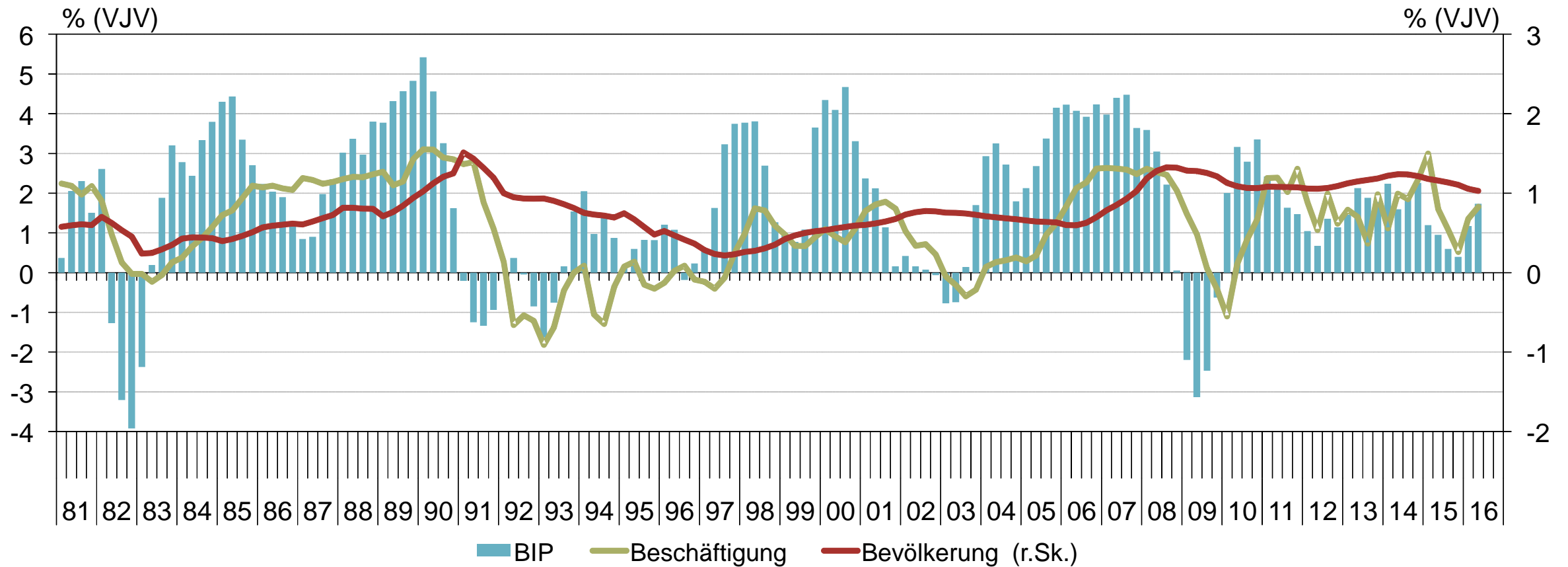
Bevölkerungsstruktur 2014 (und statisches Szenario für 2034)



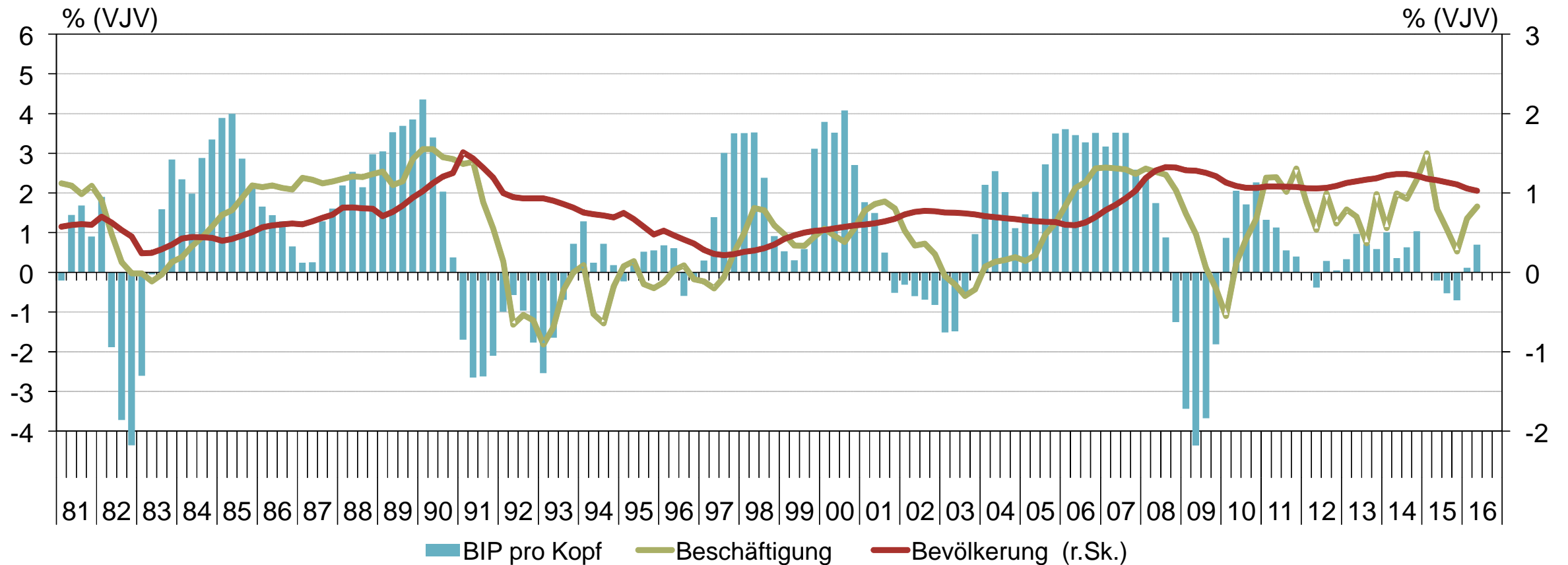
Bevölkerungsentwicklung in der Schweiz

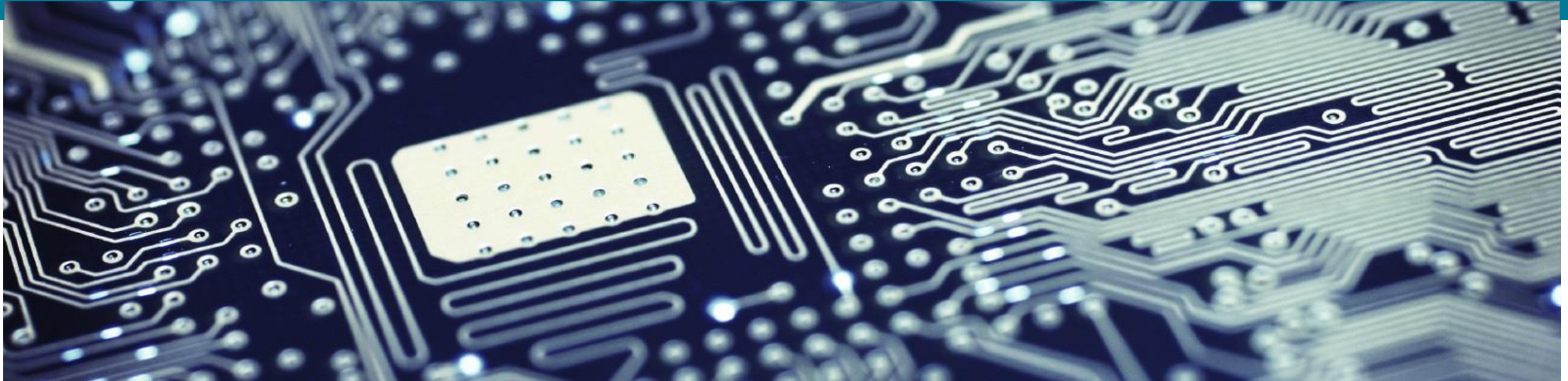


Bevölkerungs-, Beschäftigungs- und Wirtschaftswachstum



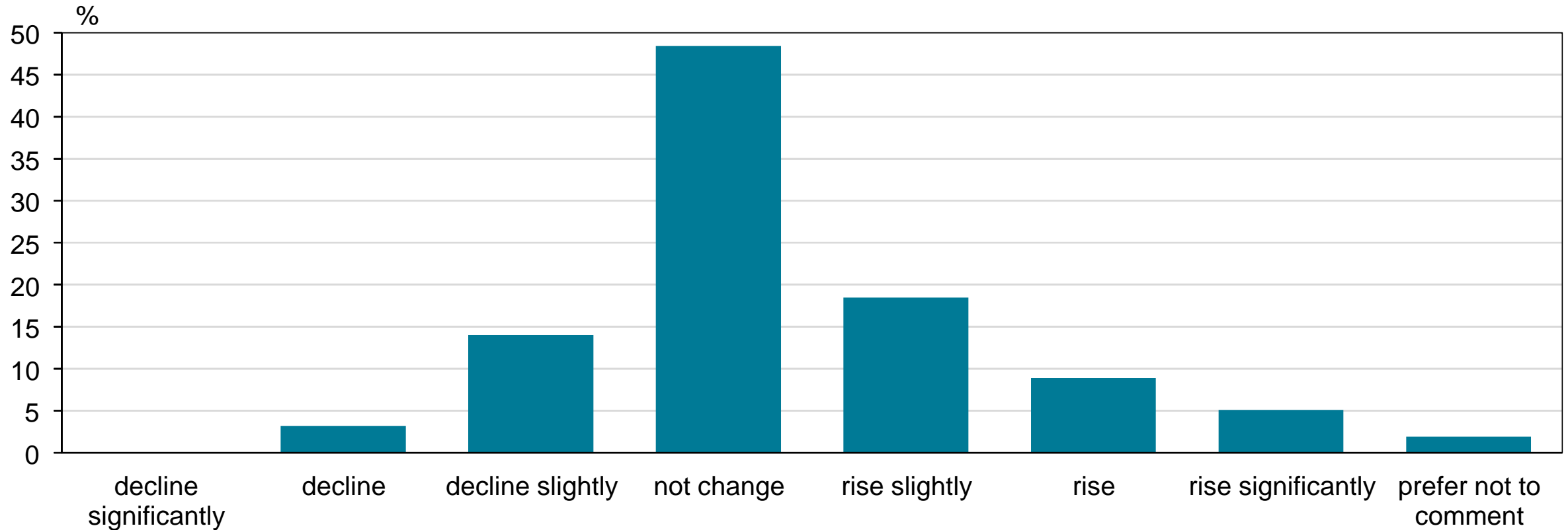
Bevölkerungs-, Beschäftigungs- und Wirtschaftswachstum





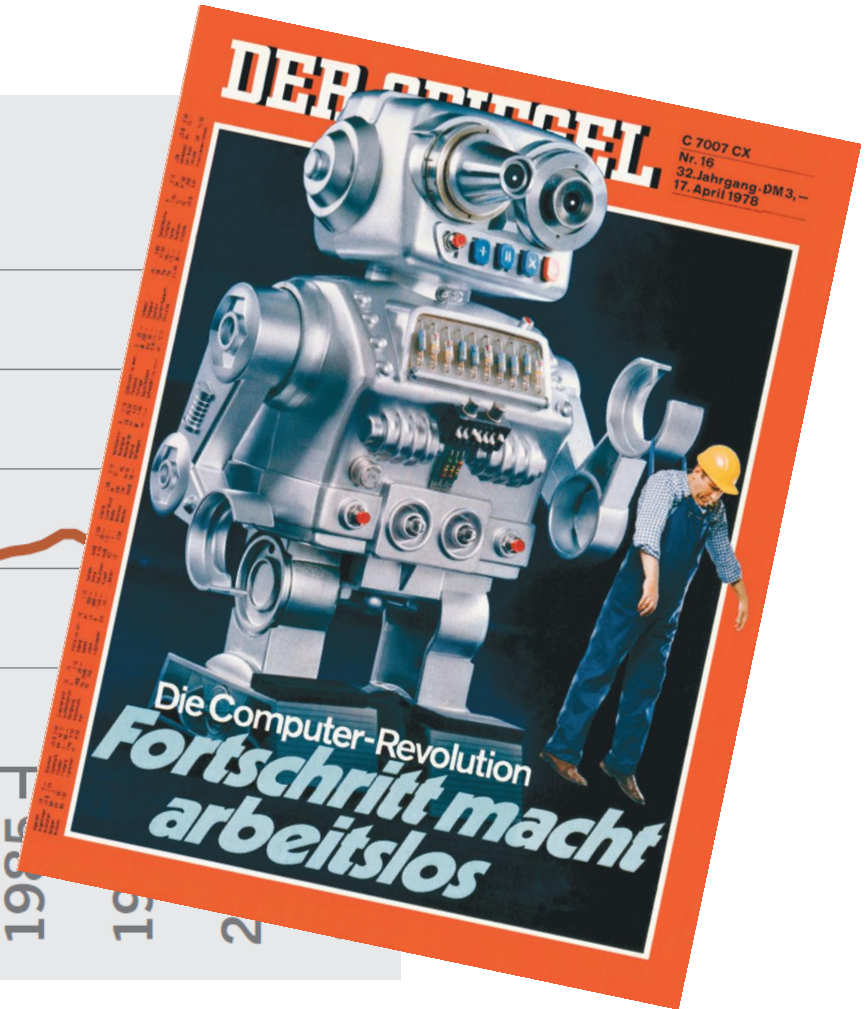
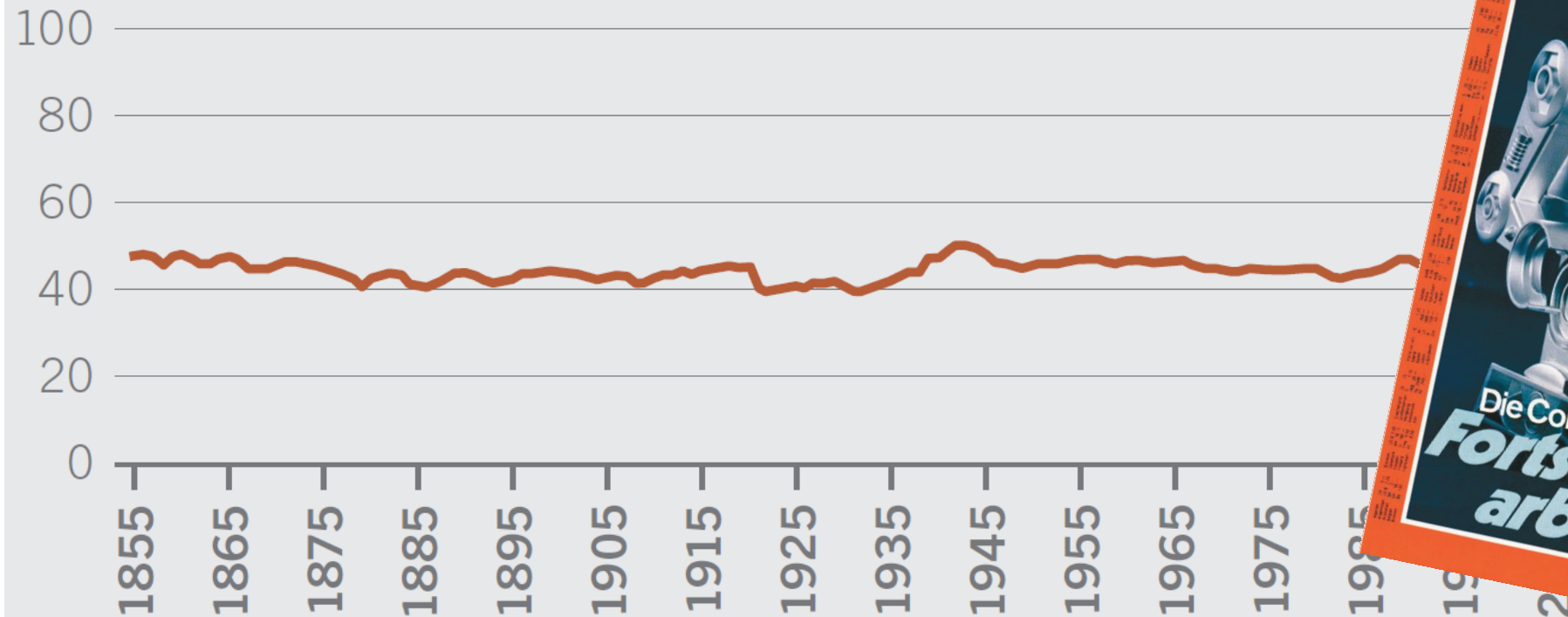
Technologischer Fortschritt

Durch diese technischen Entwicklungen wird langfristig die Arbeitslosigkeit in den Industrieländern...

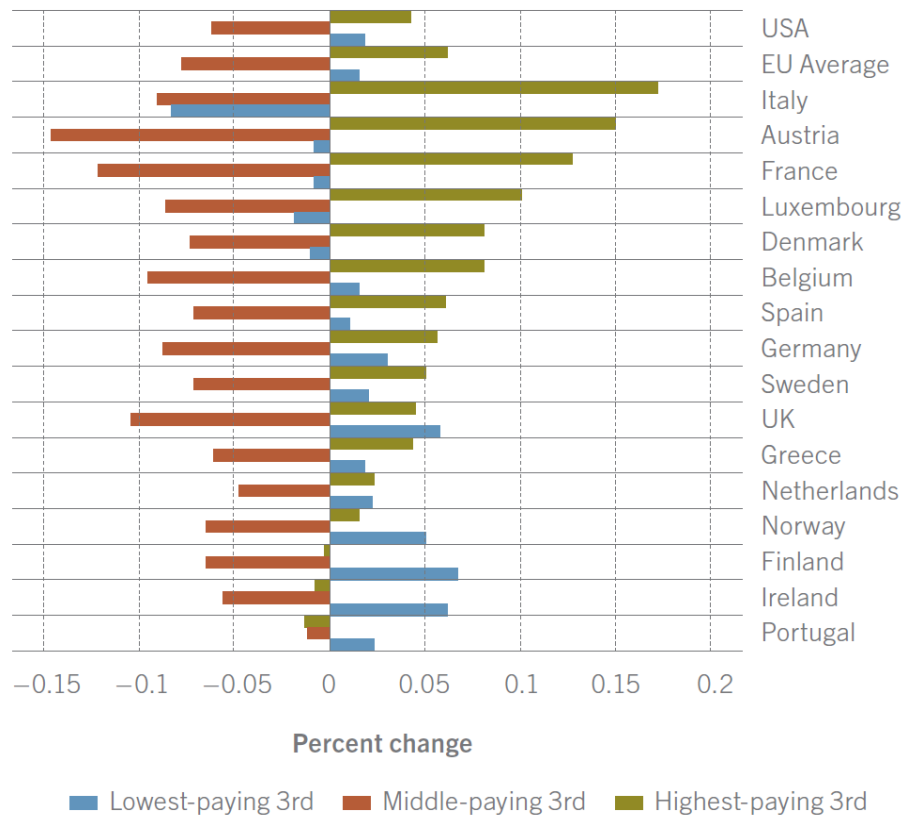


Beschäftigungsanteil in Grossbritannien, 1855 – 2015

People in work in % of total population



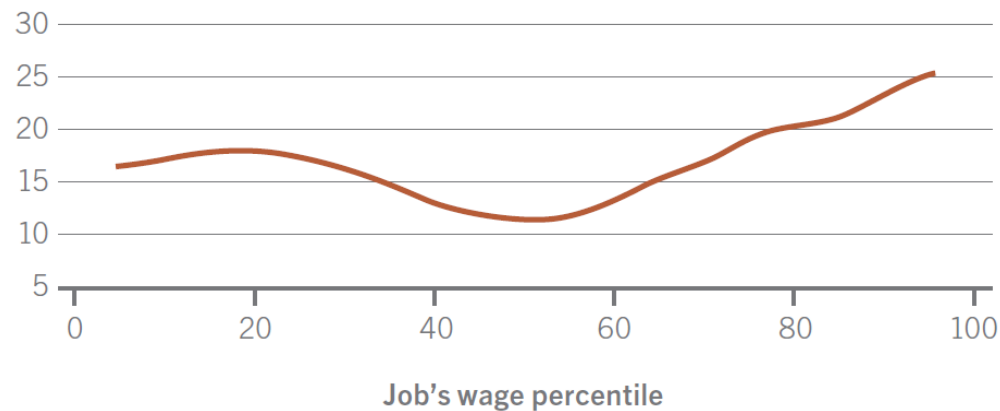
Polarisierung der Beschäftigung nach Einkommensklassen 1993 – 2006



Note: Occupations grouped by wage tercile: Low, middle, high.

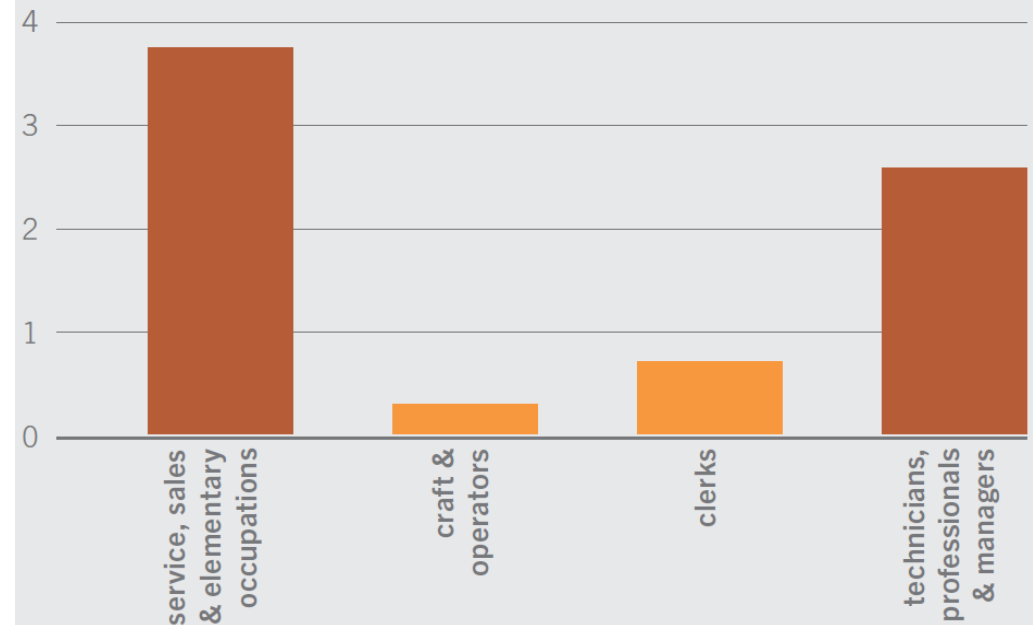
Polarisierung der Löhne, 1980–2005 (USA); 1991–2011 (CH)

Wage growth 1980–2005, in %



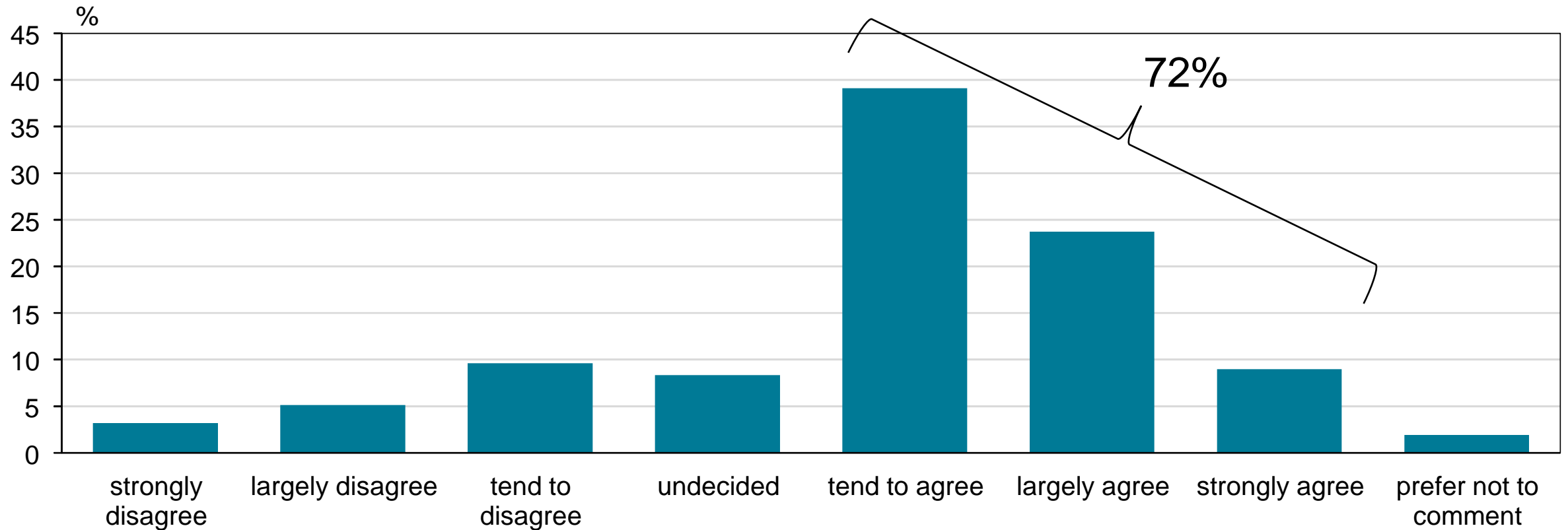
Note: The graph shows occupational employment and wage growth in the United States. Occupations are ordered on the x-axis according to their percentile in the occupational wage distribution of 1980. Figure 7 measures the relative change in an occupation's share in total employment (for instance, an occupation that expands from 1% to 1.2% of total employment has grown by 20%). Figure 8 measures the change of the mean log real hourly wage by occupation group. Wage changes are expressed in log points, which approximately correspond to percentage changes. The data series in the graph are smoothed.

Average change in hourly wages per decade, in %

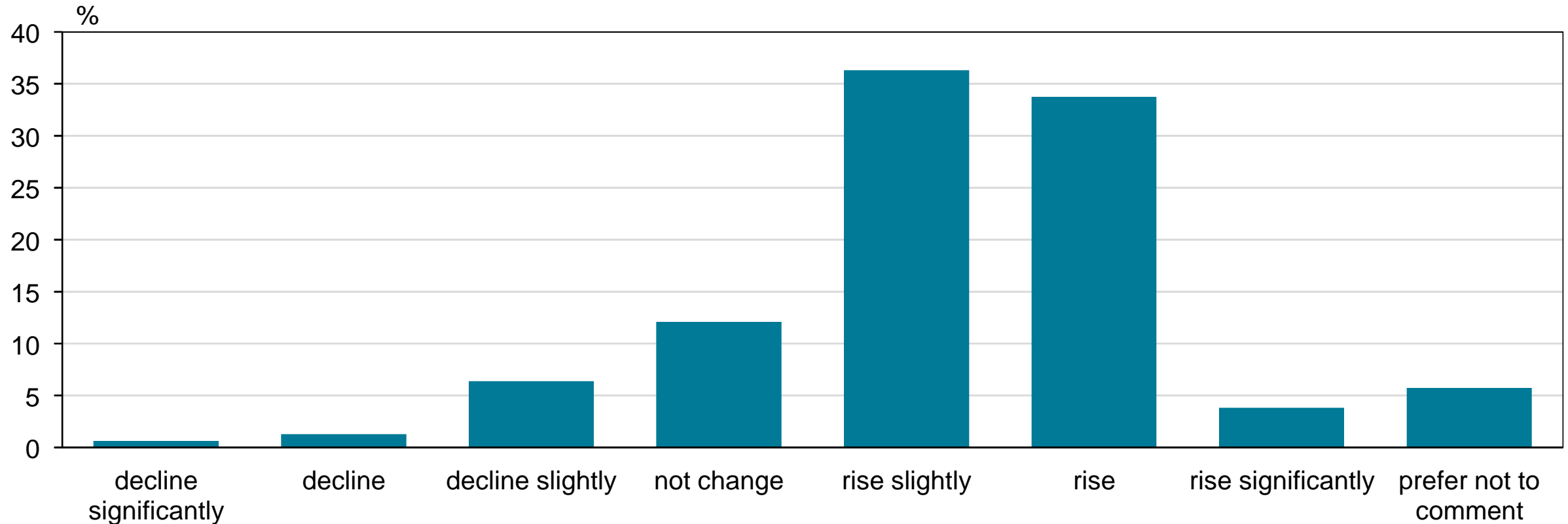


Note: These numbers represent the percentage changes per decade in the mean log hourly real wages of these occupation groups *over the entire period* from 1991 to 2011.

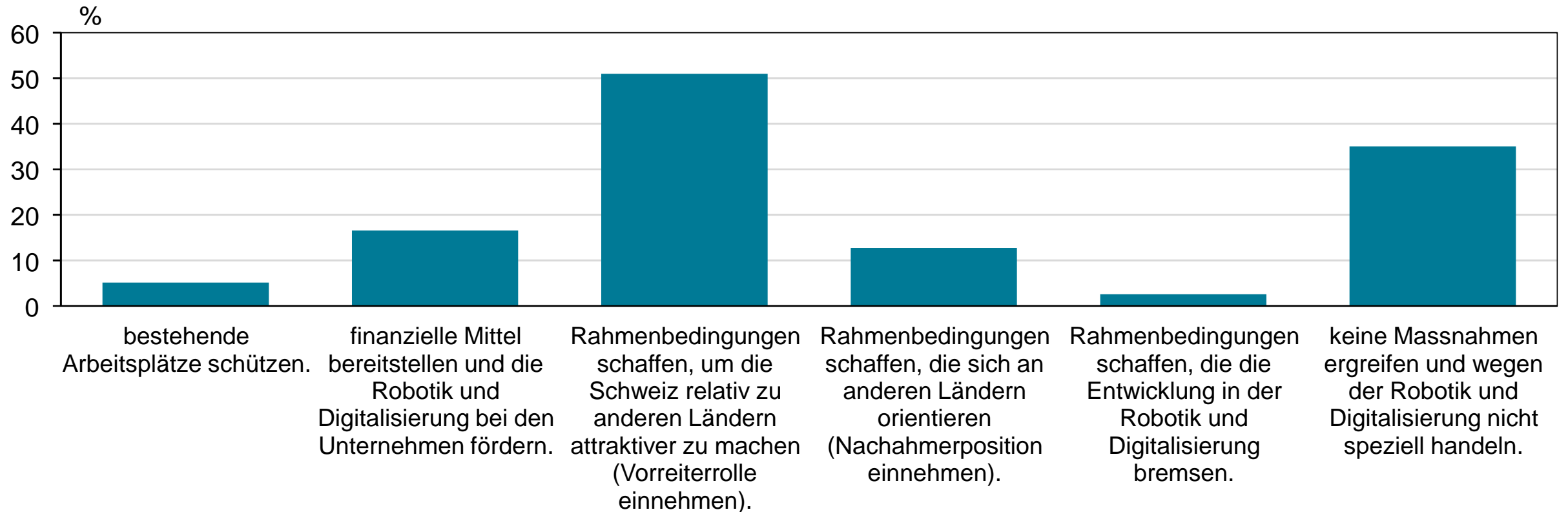
Diese Technologien führen dazu, dass die Einkommensverteilung in den Industrieländern langfristig ungleicher wird



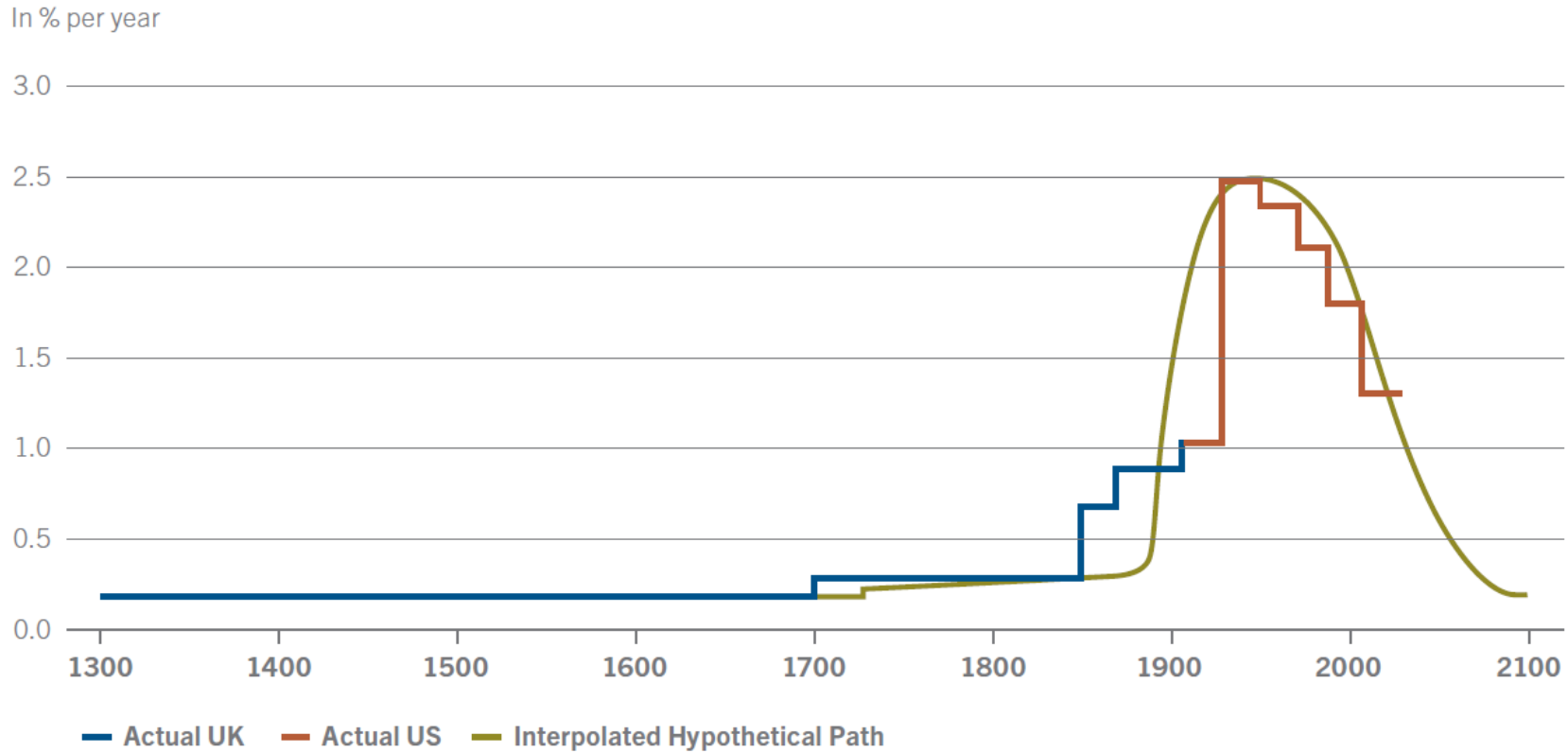
Durch diese technischen Entwicklungen wird die Wettbewerbsfähigkeit der Schweizer Wirtschaft...



Wegen der Robotik und Digitalisierung soll der Staat...



Wirtschaftswachstum 1300 – 2100

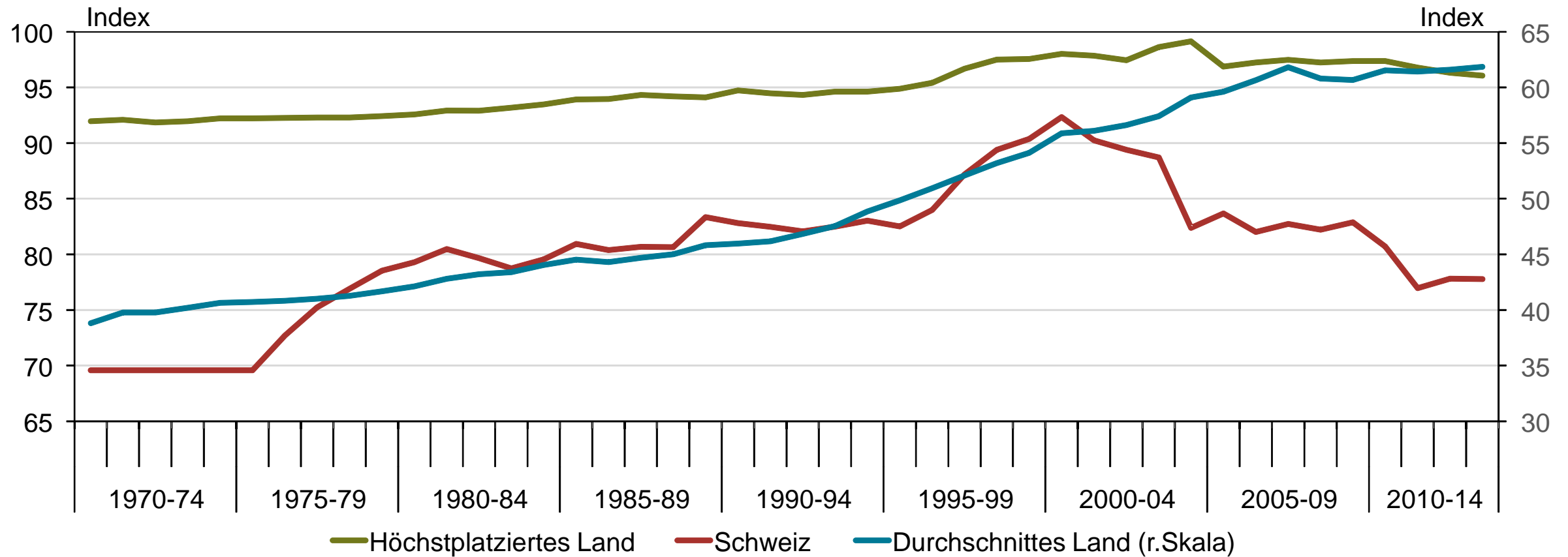


Note: Growth in real GDP per capita with actual and hypothetical paths.

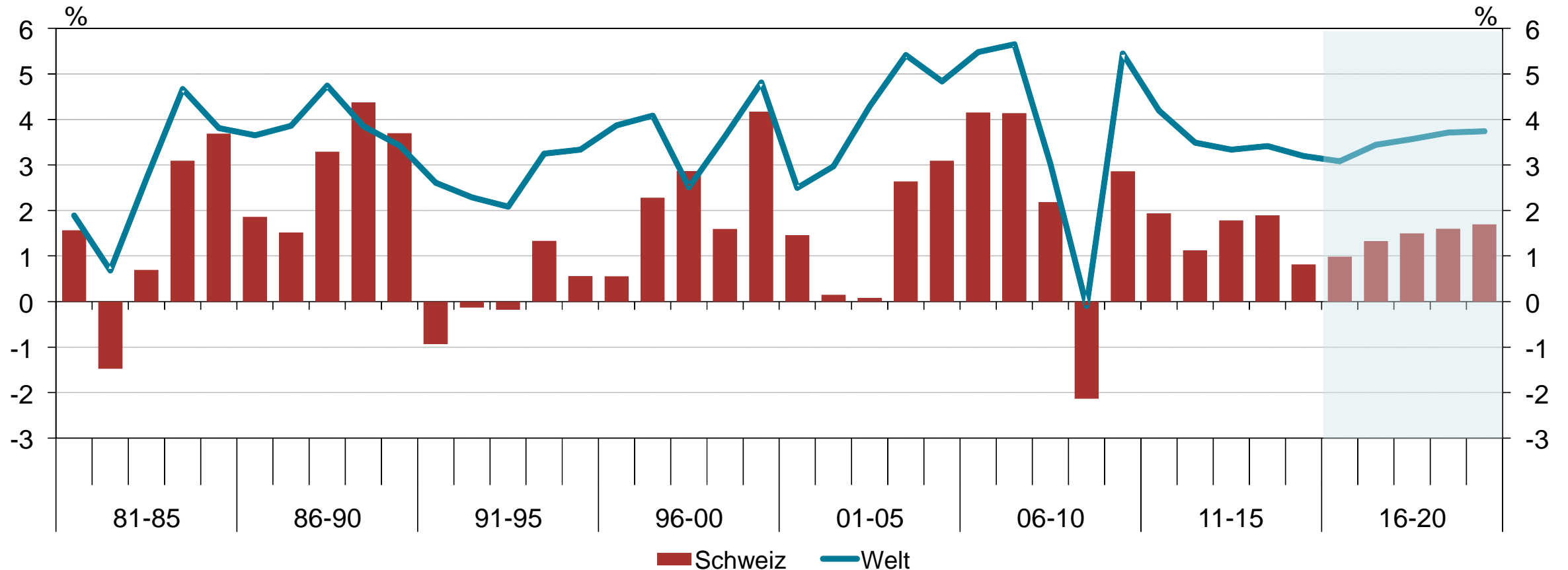


Globalisierung

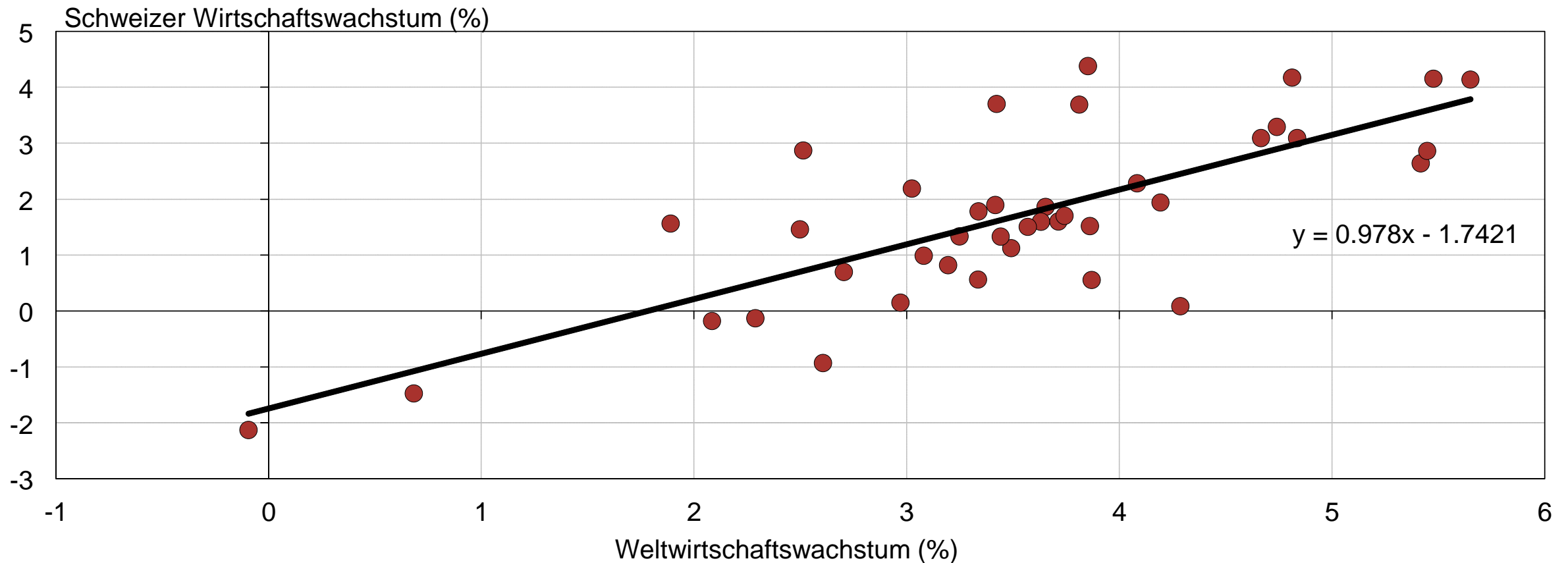
KOF Globalisierungsindex



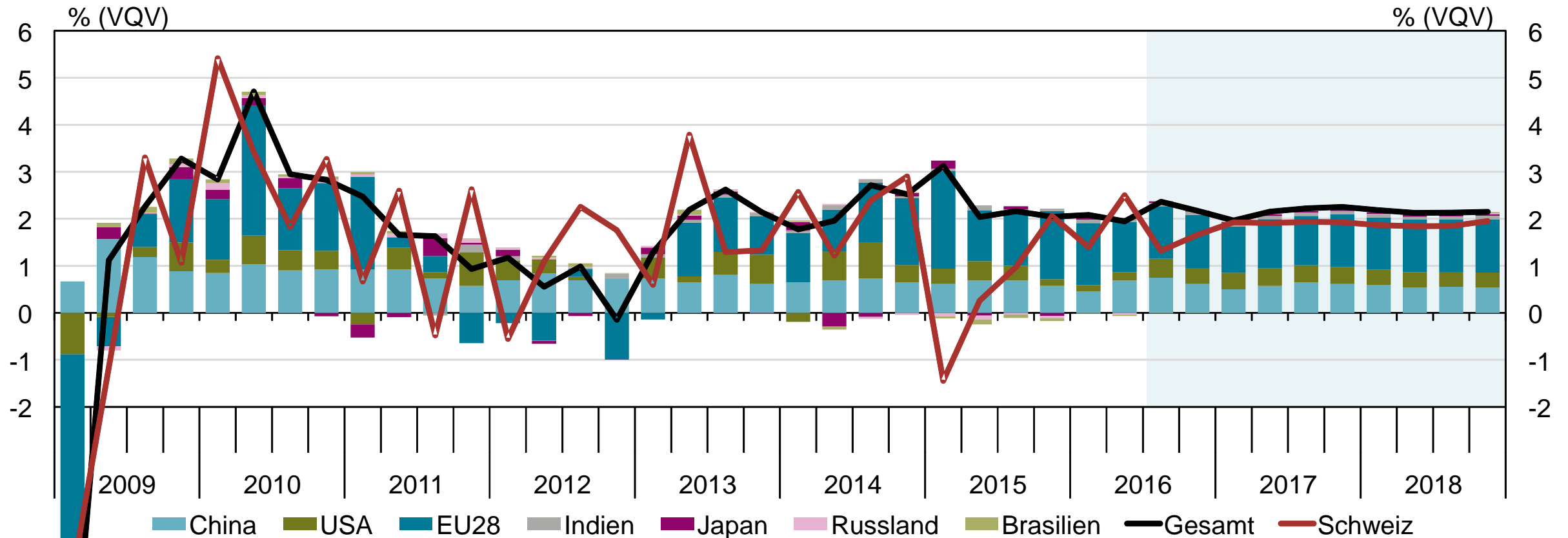
Weltwirtschaftswachstum und Wachstum der Schweiz



Weltwirtschaftswachstum und Wachstum der Schweiz



Weltwirtschaftsentwicklungen (CH-Exportgewichtet)

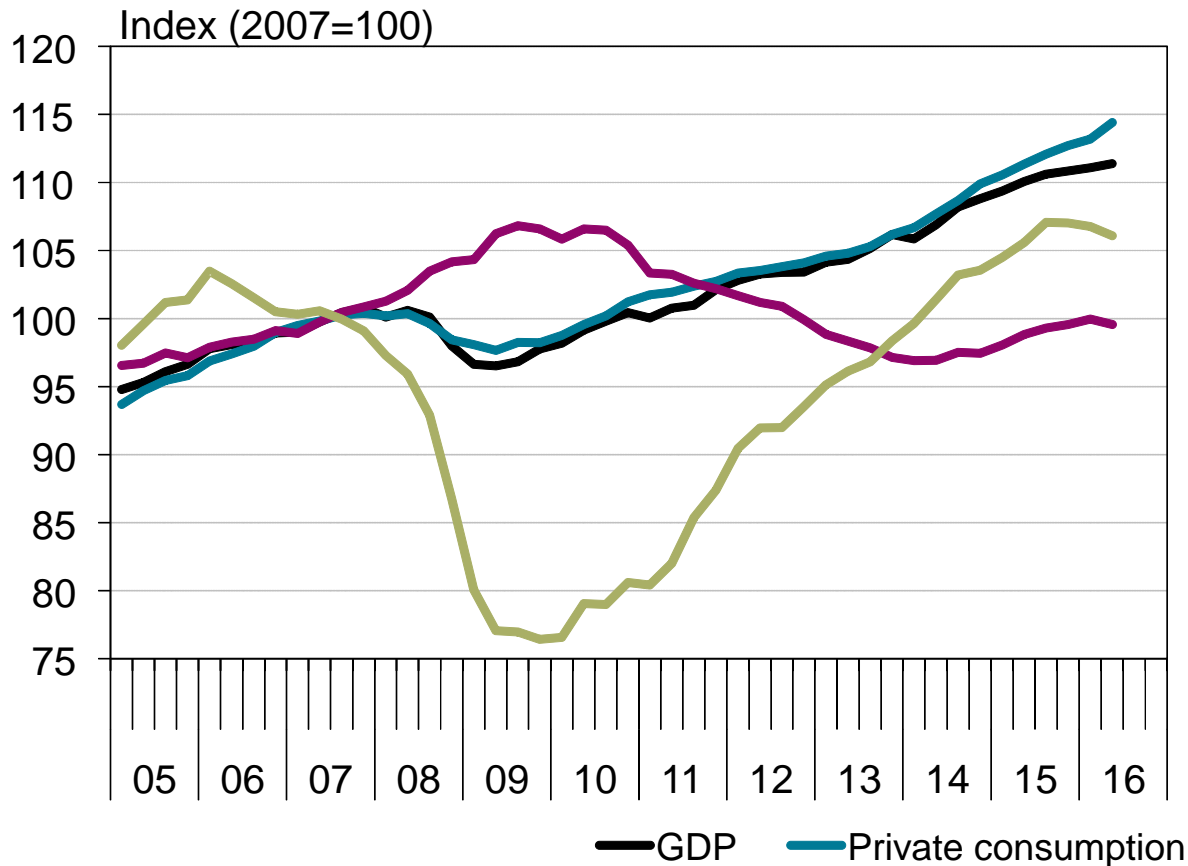




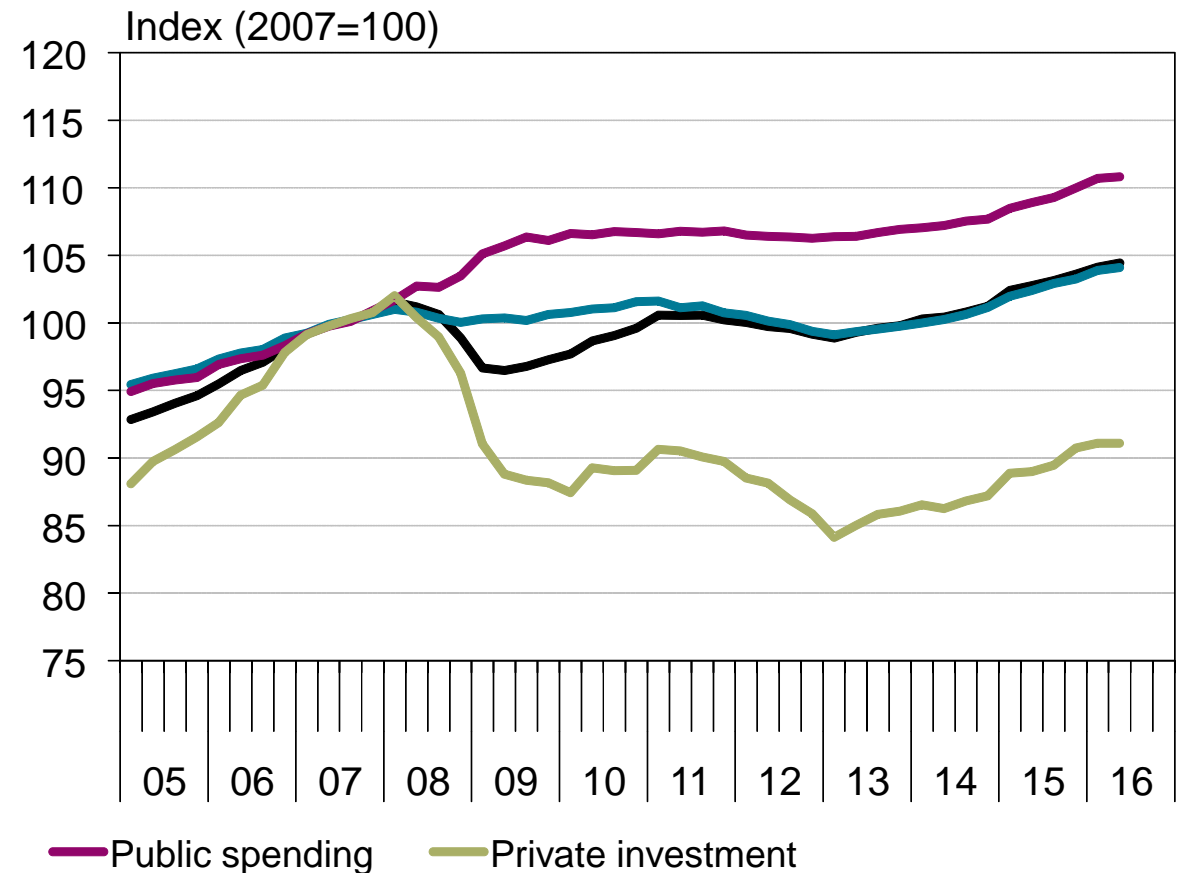
Geld- und Fiskalpolitik / Regulierung

Comparing the US and the euro area: a demand-side view

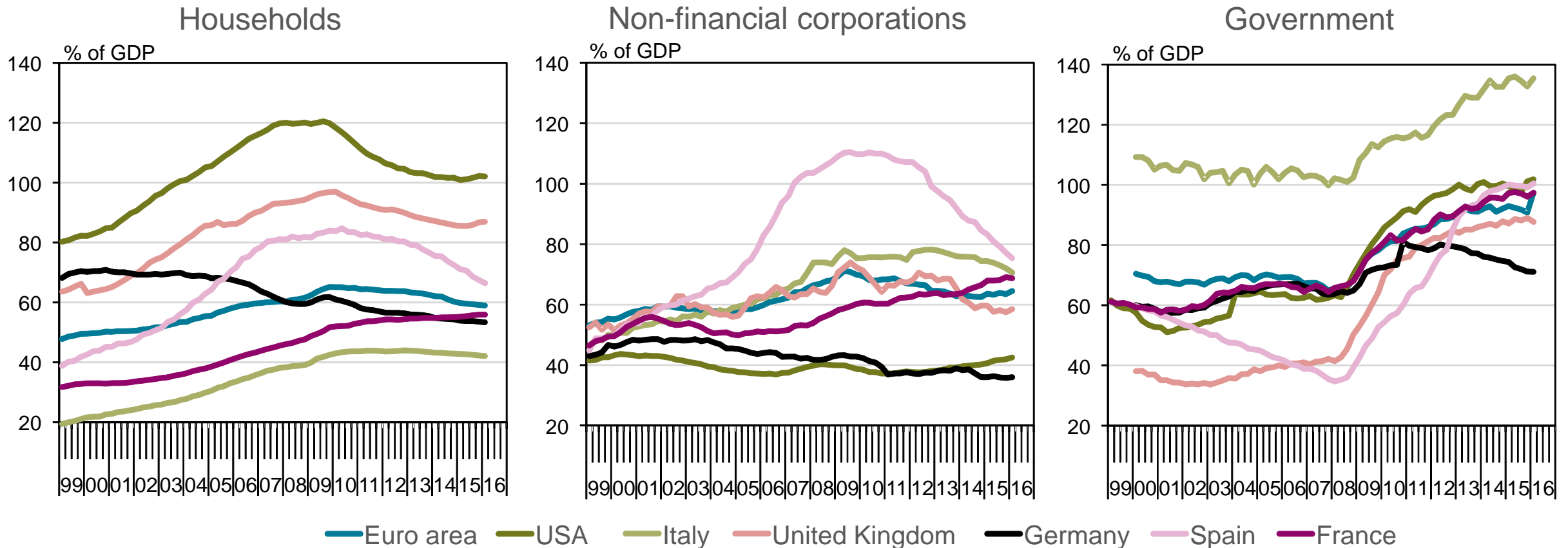
USA



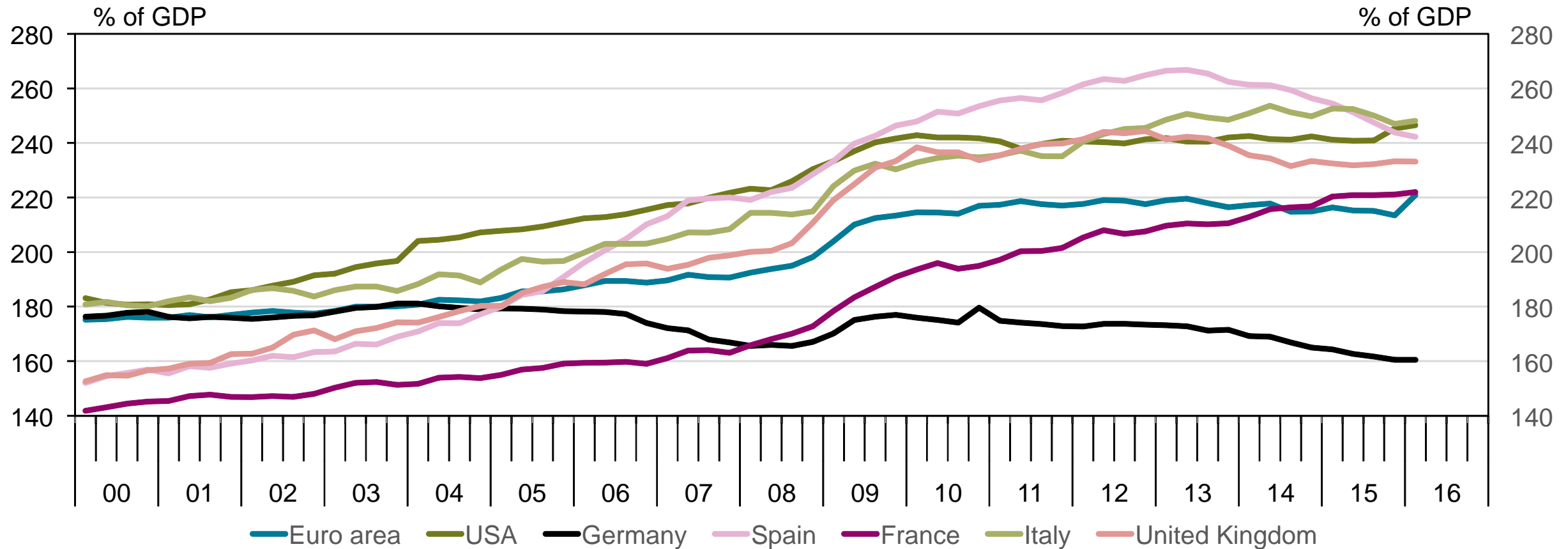
Euro area



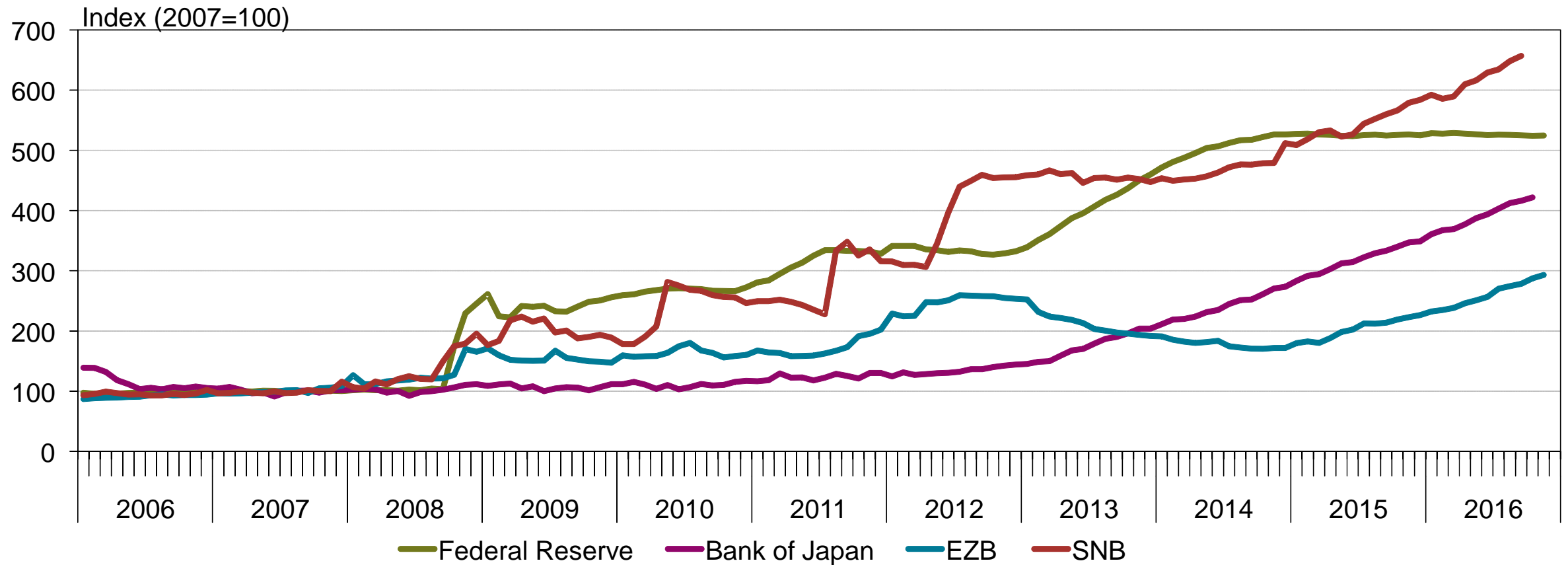
Deleveraging in the US and in major European Countries



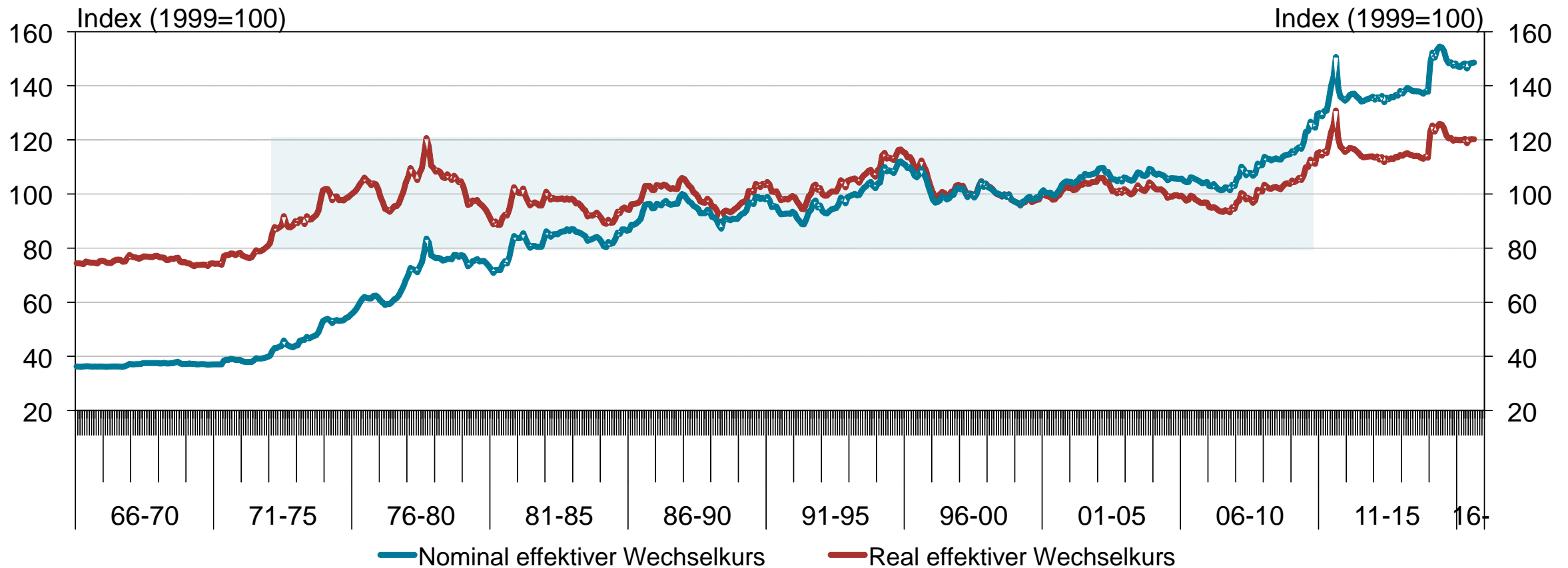
Cumulative Debt Positions – HH+Non-Fin.Corp.+Gov.



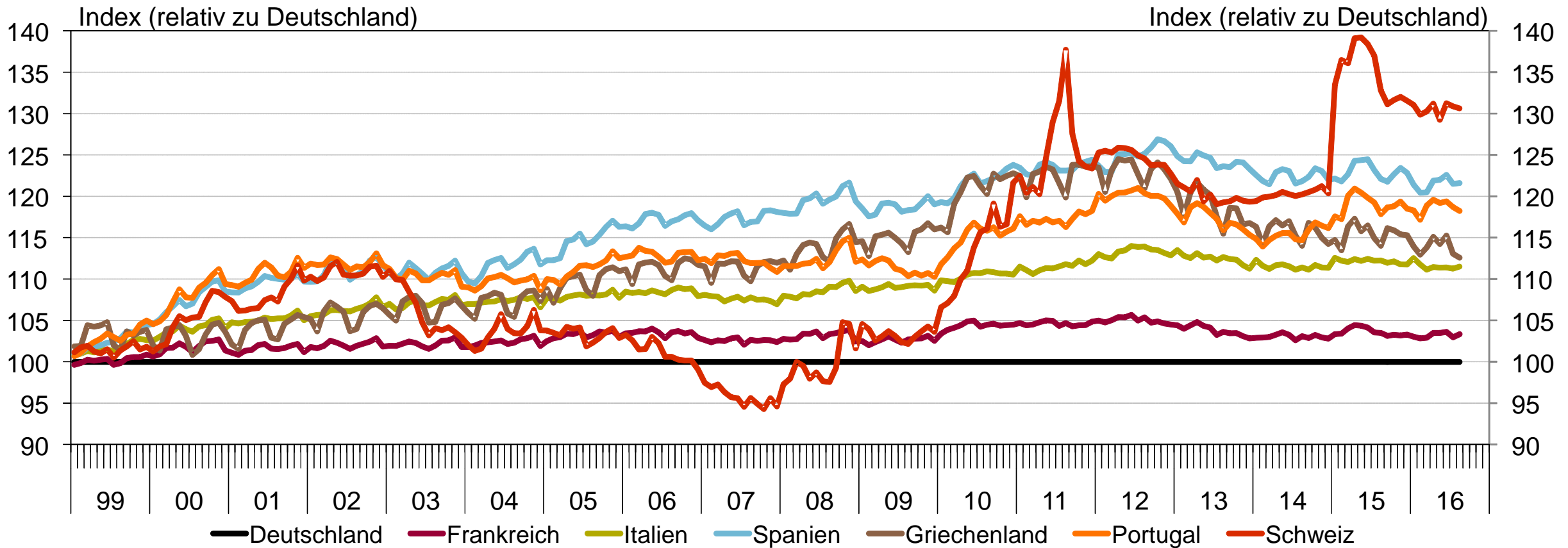
Zentralbankbilanzen



Effektive Wechselkurse für die Schweiz



Real effektive Wechselkurse gegenüber Deutschland



KOF Bulletin: der kostenlose Newsletter der KOF



Anmeldung: <http://www.kof.ethz.ch/news-und-veranstaltungen/news/kof-bulletin/anmeldung.html>